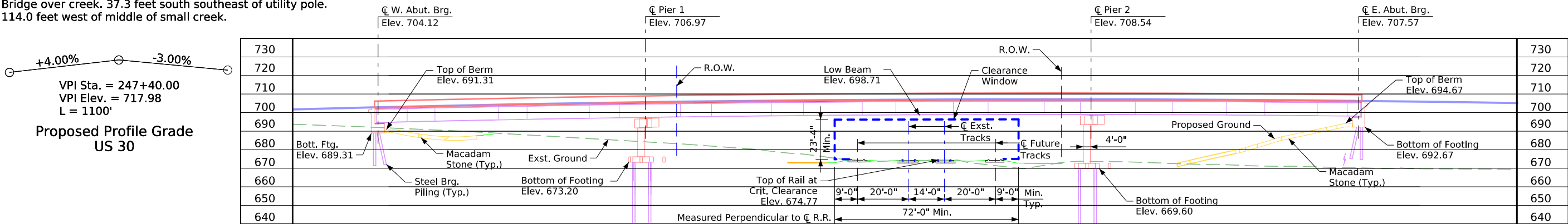


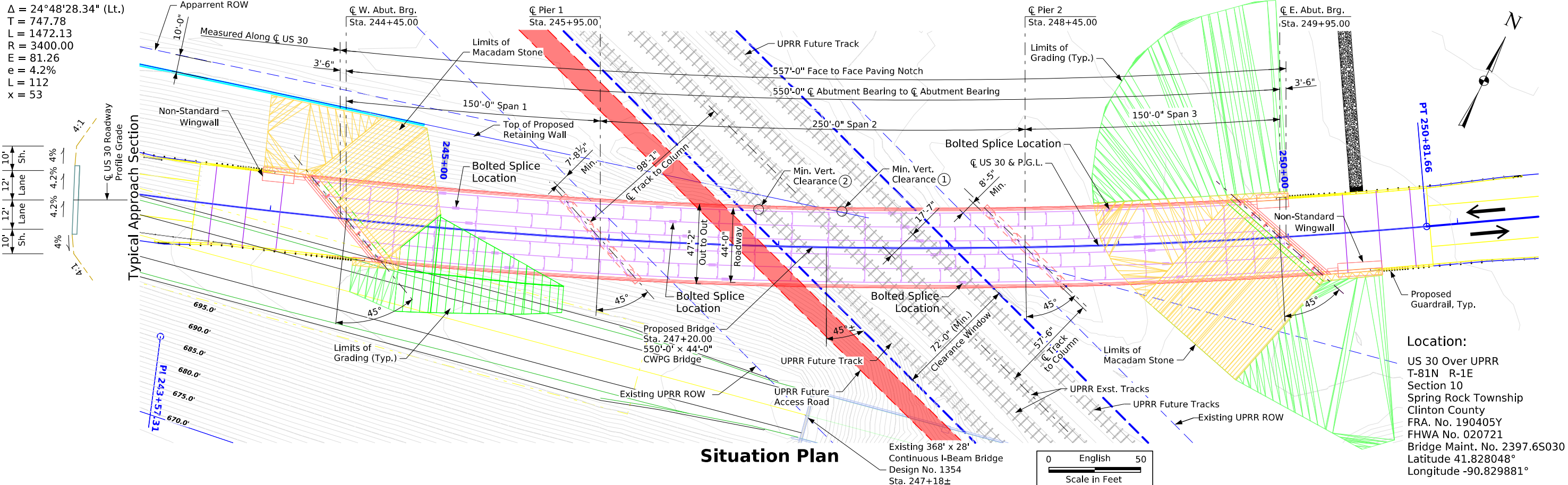
BENCH MARK: New FENO Style monument set flush with ground.
28.15 feet NW of NW corner of wingwall of NW corner of Hwy 30
Bridge over creek. 37.3 feet south southeast of utility pole.
114.0 feet west of middle of small creek.



General Notes:

This design is for the replacement of the existing
368'-0" x 28'-0" continuous I-beam bridge, Clinton County
Design No. 1354, FHWA No. 020720, Maint. 2397.65030.

$\Delta = 24^\circ 48' 28.34''$ (Lt.)
T = 747.78
L = 1472.13
R = 3400.00
E = 81.26
e = 4.2%
L = 112
x = 53



**DRAFT PRELIMINARY
NOT FOR CONSTRUCTION**

Utilities Legend:

- E1 -EL1D, Eastern Iowa Light and Power
- F02 -FO1D, F&B Communications
- G -FO2D, Sprint
- SAN. -GL1D, Alliant Energy
- W -SA1D, City of Wheatland
- WL1D, City of Wheatland

Utilities shown on this sheet are for information only, see road design sheets for final utility information.

PRELIMINARY

Design For 45° Skew (R.A.), Radius = 3400'

550'-0" x 44'-0" Continuous Welded Plate Girder Bridge

150'-0" End Spans 250'-0" Interior Span

Situation Plan

STA. 247+20.00 (US 30) Turn-in Date: June 27, 2027

Clinton County

IOWA DEPARTMENT OF TRANSPORTATION

Design No. 125 FHWA No. 020721